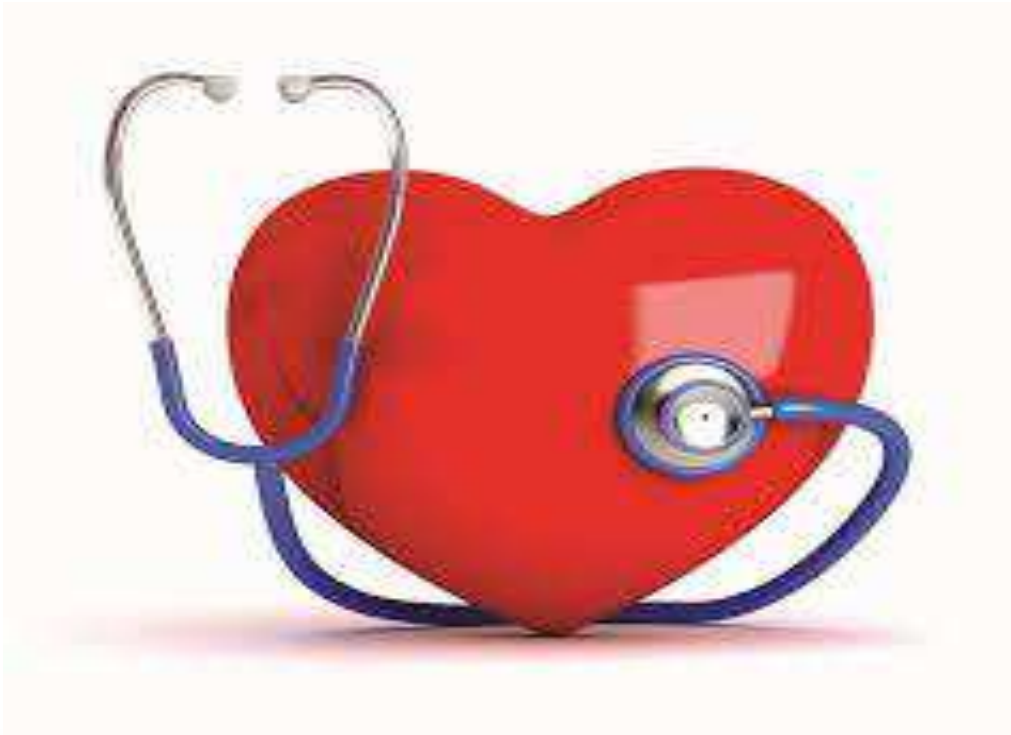




# Implementing a cardiac rehabilitation-specific Queensland Cardiac Outcomes Registry module

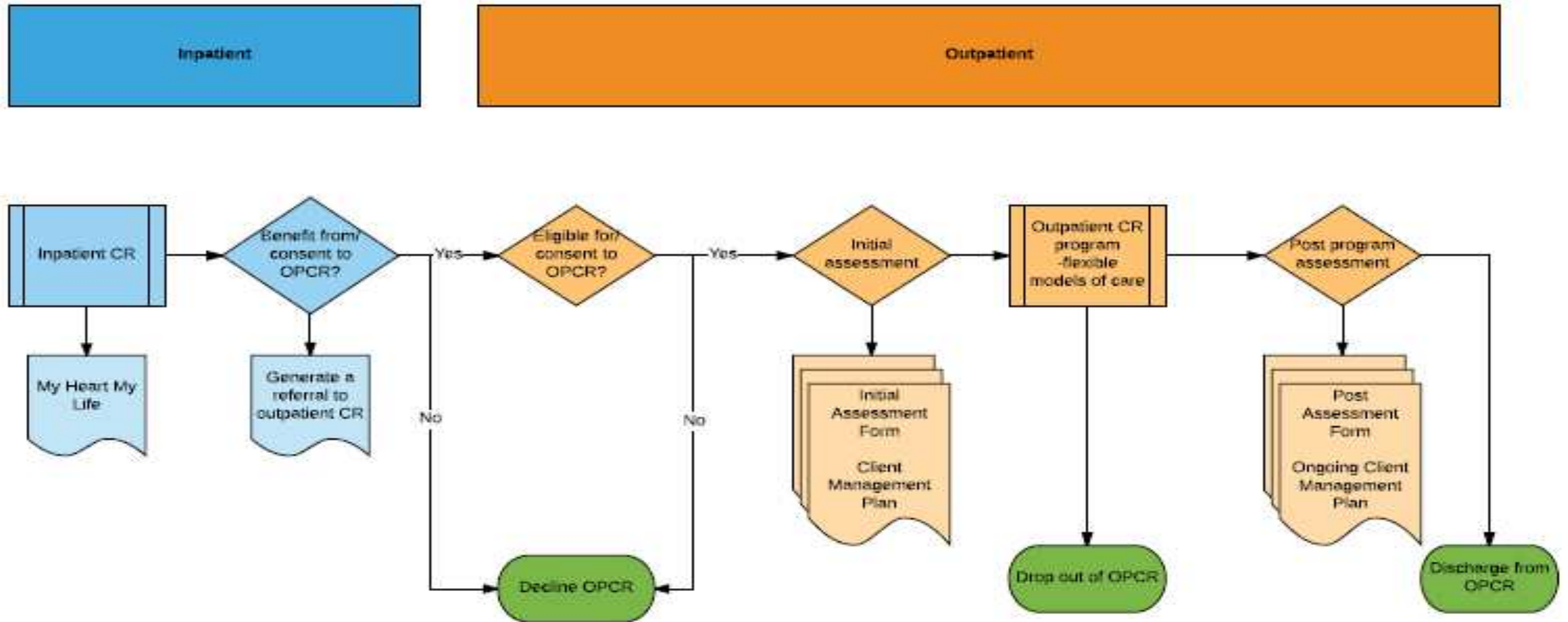
Samara Phillips  
8<sup>th</sup> August 2017

# Background



# CR Module

## CR patient journey



# What it will produce

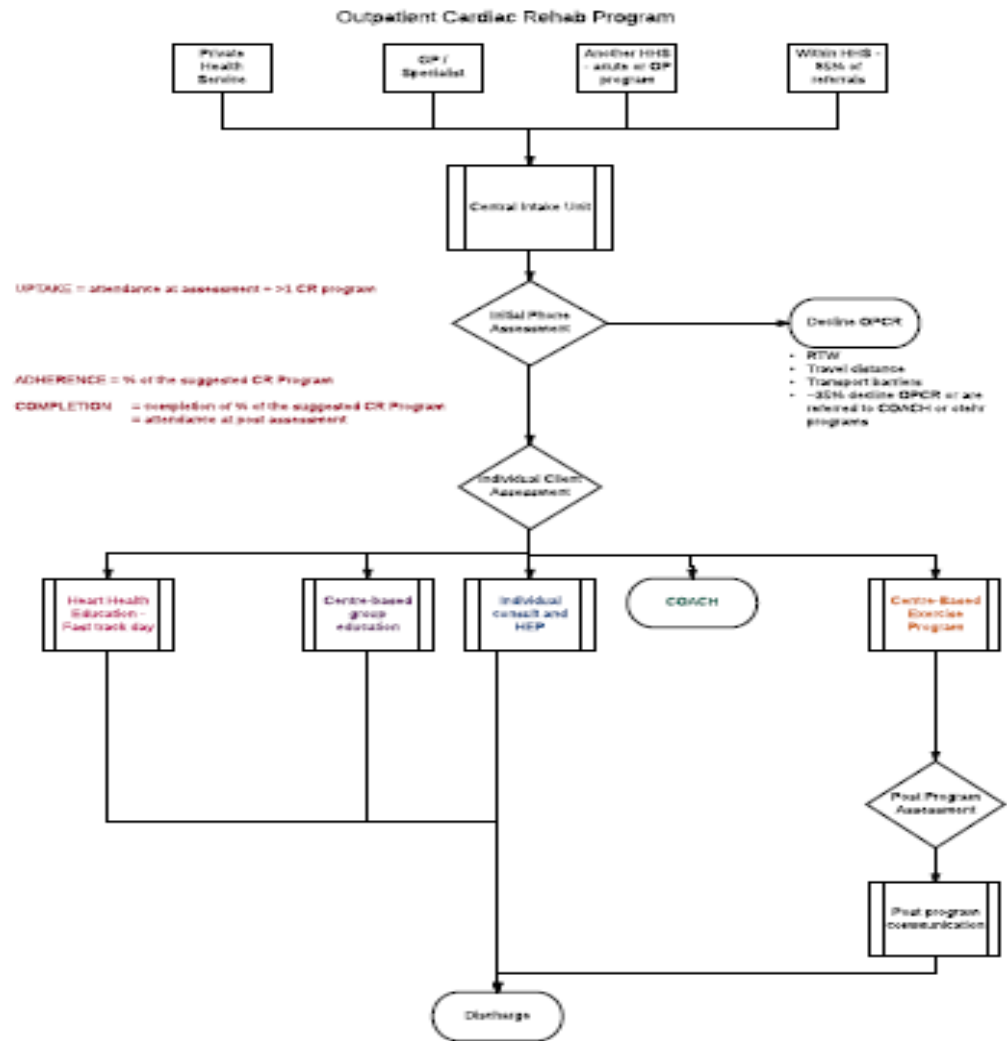
- » Referral form
- » Individual client pre-assessment record
- » Individual client management plan
- » Individual client post-assessment record
- » Individual ongoing client management plan

# CR QIP

- » \$5million non-recurrent funding available for public facilities and programs
- » \$275 available for a completed patient journey (includes referral and an assessment)
- » Overnight cardiac admission
  - » Receive individualised care plan
  - » Referral to OP CR program within 3 days of discharge
  - » Receive initial assessment within 28days of discharge
  - » Assessment contains mandatory information
- » Matching acute episode within QHAPDC

# OPCR Practice across QLD

- » Mapping activity
- » 56 OPCR programs registered
- » Different MOC



# Heartbeats Pilot

- » 2 'live' sites
- » 8 test sites
- » Checking for obvious errors and suit workflow processes
- » Issues:
  - » Ability to amend assessment
  - » Use on iPads, laptops and desktops
  - » Suit disparity of practice
  - » Language

# Heartbeats Implementation

- » 'GO LIVE' 1<sup>st</sup> July 2017
- » Issues
  - » Disparity of practice
  - » Inpatient vs outpatient tool
  - » Paper vs electronic
  - » Flexible MOC
  - » CR QIP



# Early Results

- » Number of referrals made to outpatient CR in July 2017: 1,245 (1,291 this FY)
- » Number of programs referred to: 46 different CR outpatient programs
- » Number of sites referred from: 57 different sites including private/GP referrals

# What's Next

- » CR strategic working group
- » Data governance group
- » MOC exploration

# THANKYOU

I'd like to acknowledge the 'builders and developers' of the Heartbeats-CR module

- Marcus Prior
- Mark Lancaster

Also acknowledge the SCCN and QCOR

- Kylie Kidby
- Jane Faulkner
- Jillian Milne

# Contact Details

- » Samara Phillips
- » [samara.phillips@health.qld.gov.au](mailto:samara.phillips@health.qld.gov.au)
- » 0427 571 279

